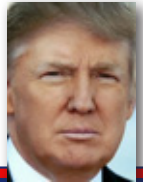
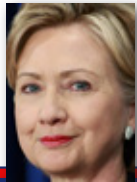


2016 Christian Coalition VOTER GUIDE



Donald Trump (R)

Presidential Election



Hillary Clinton (D)

ISSUES

Supports	Education Vouchers that Allow Parents to Choose Public or Private School for their Children	Opposes
Supports	Voluntary Prayer in Public Schools and Facilities	Opposes
Opposes	Increase Federal Income Taxes or Income Tax Rates	Supports
Supports	Permanent Elimination of the "Death Tax"	Opposes
Unknown	Passage of a Balanced Budget Amendment to the U.S. Constitution	Opposes
Supports	Appointing Judges Who Will Adhere to a Strict Interpretation of the Constitution	Opposes
Opposes	Further Restrictions on the Right to Keep and Bear Arms	Supports
Opposes	Public Funding of Abortions (Such as Govt. Health Benefits and Planned Parenthood)	Supports
Supports	Parental Notification for Abortions by Minors	Opposes
Supports	Increase Border Security Including Additional Infrastructures	Opposes
Supports	Repealing the Nationalized Health Care System that Forces Citizens to Buy Insurance or Pay Fines	Opposes
Supports	Removing Campaign Free Speech Restrictions that are Placed on Some Organizations but Not Others	Opposes
Supports	Federal Tuition Tax Credits for Parents who Home School or Send their Child to a Private School	Opposes
Unknown	Enacting an Energy Independence Plan in First 100 Days of New Congress	Unknown
Supports	The US Should Continue to Support and Stand with the Nation of Israel Against her Enemies	Supports

donaldjtrump.com

hillaryclinton.com

Each candidate was sent a 2016 Issue Survey by mail and/or facsimile (Fax) machine. When possible, positions of candidates on issues were verified or determined using voting records and/or public statements (an "*" indicates such materials were used).

Paid for and authorized by the Christian Coalition; PO Box 37030 - Washington, DC 20013

The Christian Coalition is a pro-family, citizen action organization. This voter guide is provided for educational purposes only and is not to be construed as an endorsement of any candidate or party.

★ ★ ★ Vote on November 8th! ★ ★ ★



Loretta Sanchez (D)

California US Senate Election



Kamala Harris (D)

ISSUES

Supports	Increase Federal Income Taxes or Income Tax Rates	Unknown
Opposes	Permanent Elimination of "Death Tax"	Unknown
Opposes	Passage of a Balanced Budget Amendment to the U.S. Constitution	Unknown
Unknown	Appointing Judges Who Will Adhere to a Strict Interpretation of the Constitution	Unknown
Supports	Further Restrictions on the Right to Keep and Bear Arms	Supports
Supports	Public Funding of Abortions (Such as Govt. Health Benefits and Planned Parenthood)	Supports
Opposes	Parental Notification for Abortions by Minors	Opposes
Unknown	Increase Border Security Including Additional Infrastructures	Unknown
Opposes	Repealing the Nationalized Health Care System that Forces Citizens to Buy Insurance or Pay Fines	Opposes
Supports	The U.S. Should Continue to Support and Stand with the Nation of Israel Against her Enemies	Supports

loretta.org

kamalaharris.org

Dear friend,

You are holding one of the most powerful tools Americans have had to impact our society during elections – the Christian Coalition voter guide.

I encourage you to help spread this important information to others by making additional copies for distribution. You can visit our website at www.cc.org/voterguides to download and print voter guides, as well as forward them to others via email, Facebook and Twitter.

This is a crucial election and too much is at stake for God's people to sit on the sidelines. Be sure to make your vote count by going to the polls this coming Election Day!

Sincerely,
Roberta Combs
President, Christian Coalition



Share Christian Coalition Voter Guides with Others!

★ ★ ★ www.cc.org/voterguides ★ ★ ★